

ALTAMAHA REGION

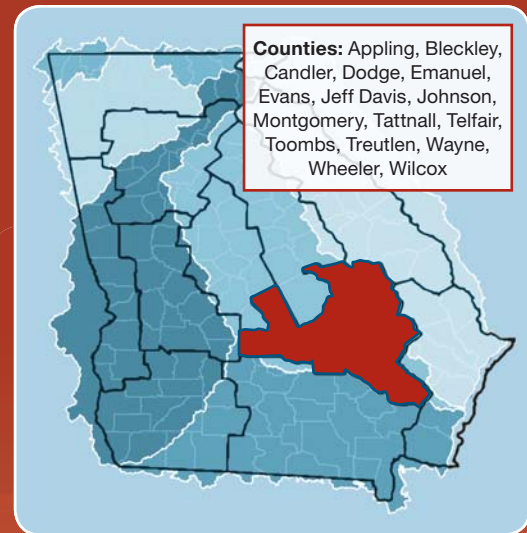
BACKGROUND

The 2004 Comprehensive State-wide Water Management Planning Act authorized the development of the State Water Plan. The State Water Plan, which was adopted by the General Assembly in 2008, calls for:

- the preparation of regional water plans;
- the establishment of ten regional water planning councils to prepare the plans; and,
- the Georgia Environmental Protection Division (EPD) with providing technical assistance to the councils including contractor support, guidance, resource assessments and forecasts.

COUNCIL ACTIVITIES, 2009-2011

ACTIVITY	STATUS
Council Meetings	5 in 2009 / 4 in 2010 / 2 in 2011
Council Leadership	L. Brinson Lanier, Chair and Michael A. Polsky, Vice Chair
Memorandum of Agreement	Executed with Department of Community Affairs and EPD
Vision and Goals	Adopted
Public Involvement Plan	Adopted
Subcommittees	Vision and Goals, Water and Wastewater Forecasting, Public Involvement Plan, Management Practices, Plan Drafting
Draft Water Resource Assessments	EPD presented, January 2010
Draft Water and Wastewater Demand Forecasts	EPD presented, March-June 2010
Management Practices	Select, evaluate, refine, finalize, June 2010-May 2, 2011
Initial Recommended Regional Water Plan	Submit to EPD, May 2, 2011
Address Public Comments	Review and revise based on public comments received
Final Recommended Regional Water Plan	Submit to EPD Director for adoption, September 30, 2011

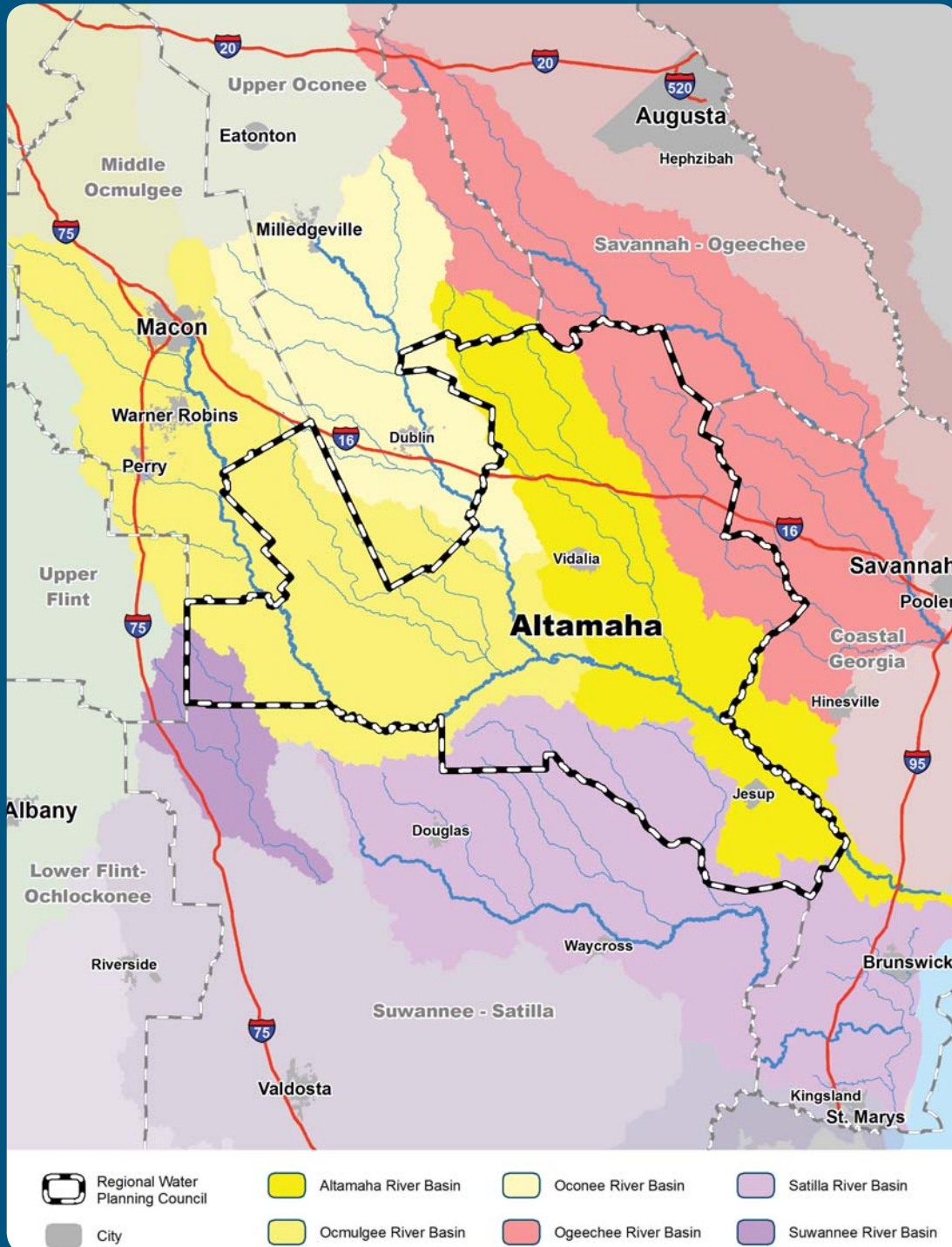


KEY WATER RESOURCE ISSUES BEING ADDRESSED BY THE COUNCIL

1. Current and future groundwater supplies for municipal/domestic, industrial and agricultural water use
2. Surface water availability to meet current and future surface water demands
3. Low dissolved oxygen and other water quality issues in streams during periods of low flow
4. Collaboration with other regions that share water resources to ensure that activities do not adversely impact water resources of either region
5. Climate and water supply variability and extremes



KEY WATER FEATURES OF THE ALTAMAHA REGION



ALTAMAHA COUNCIL MEMBERS

- GARY BELL**
Claxton, Evans County
- RANDY BRANCH, Alternate**
Baxley, Appling County
- GUY R. BULLOCK**
Pitts, Wilcox County
- JAMES M. BURNS**
Tarrytown, Montgomery County
- GERALD A. DEWITT, Alternate**
Jesup, Wayne County
- WILL DONALDSON, JR.**
Metter, Candler County
- CLEVE EDENFIELD**
Swainsboro, Emanuel County
- JIM FREE**
Swainsboro, Emanuel County
- RANDY GIDDENS**
Eastman, Dodge County
- LEN HAUSS**
Jesup, Wayne County
- EDWARD S. JEFFORDS**
Jesup, Wayne County
- PHILLIP JENNINGS**
Soperton, Treulton County
- L. BRINSON LANIER, Chair**
Metter, Candler County
- DAN MCCRANIE**
Eastman, Dodge County
- STEVE MEEKS**
Kite, Johnson County
- BUDDY PITTMAN**
Eastman, Dodge County
- MICHAEL A. POLSKI, Vice Chair**
Cochran, Bleckley County
- JOHN E. ROLLER**
Mount Vernon, Montgomery County
- SUE B. SAMMONS**
Lumber City, Telfair County
- DOUG SHARP**
Jesup, Wayne County
- PAUL A. STAVRIOTIS**
Glennville, Tattnall County
- JAMES E. STRICKLAND**
Glennville, Tattnall County
- DENT L. TEMPLES**
Lyons, Toombs County
- LINDSAY THOMAS**
Screven, Wayne County
- WILLIAM G. TOMBERLIN**
Abbeville, Wilcox County
- MICHAEL WILLIAMS**
Cochran, Beckley County
- RUSS YEOMONS**
Swainsboro, Emanuel County
- REP. GREG MORRIS**
(Ex-Officio)
- SEN. TOMMIE WILLIAMS**
(Ex-Officio)

CURRENT WATER DEMAND

TOTAL = 264 MGD

Note: For 2005, the Altamaha region total thermoelectric water demands were 58 MGD and total returns were 22 MGD.

